

## On the edge. It's the only place to live.

The best of waterfront living comes together here, at the water's edge. Distinctive architecture in an intimate, boutique building reflects the serenity of the natural waterfront environment. With the water, the park and the seawalk so close you can practically touch them, there's nothing between you and your waterfront dream. Get closer to waterfront living, here at Coopers Pointe.



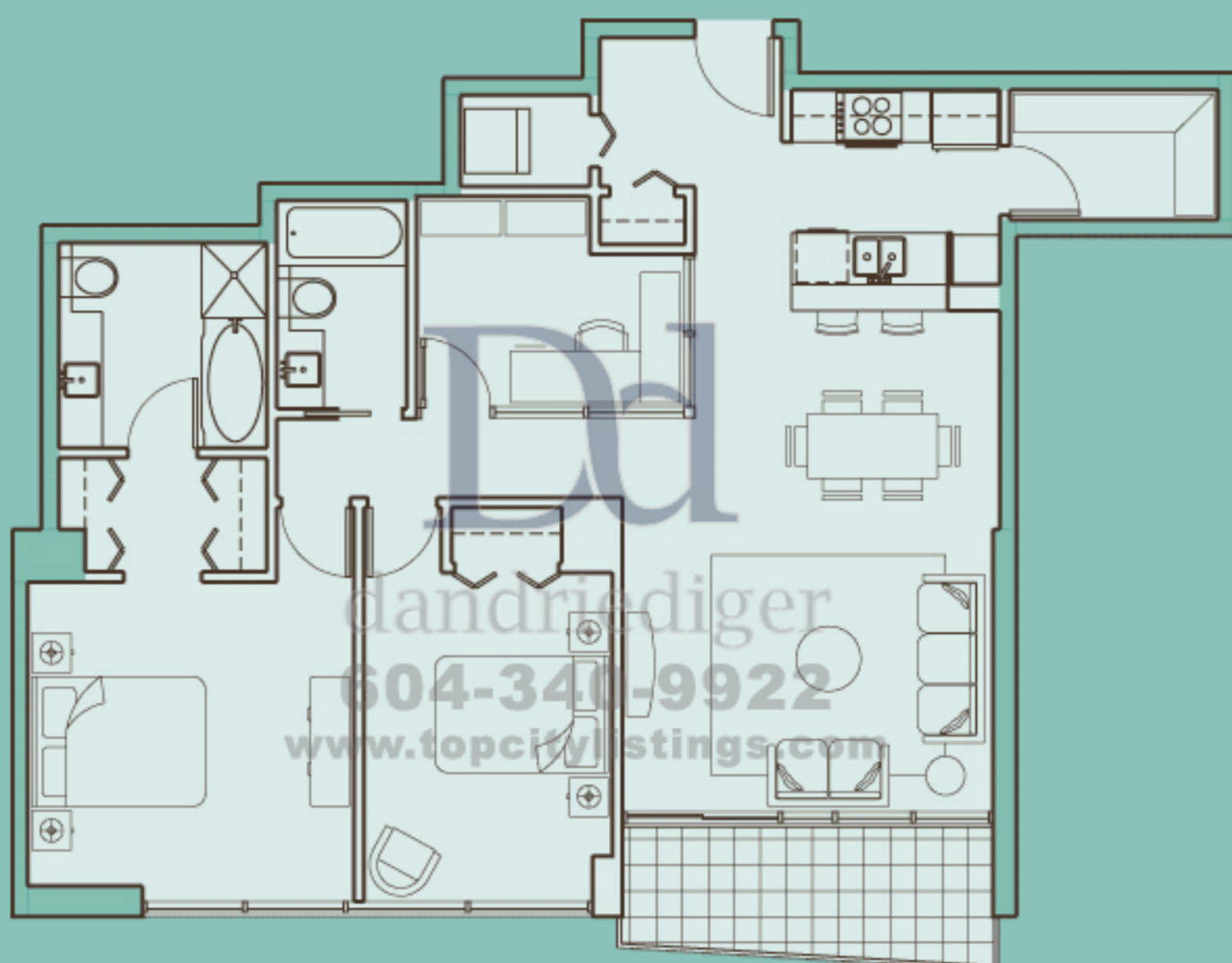
### Suite 01

Two Bedroom + Den

FLOORS	6th to 17th
ENCLOSED AREA	1150 sq. ft.
BALCONY	78 sq. ft.
TOTAL AREA	1228 sq. ft.



Coopers Park & Waterfront



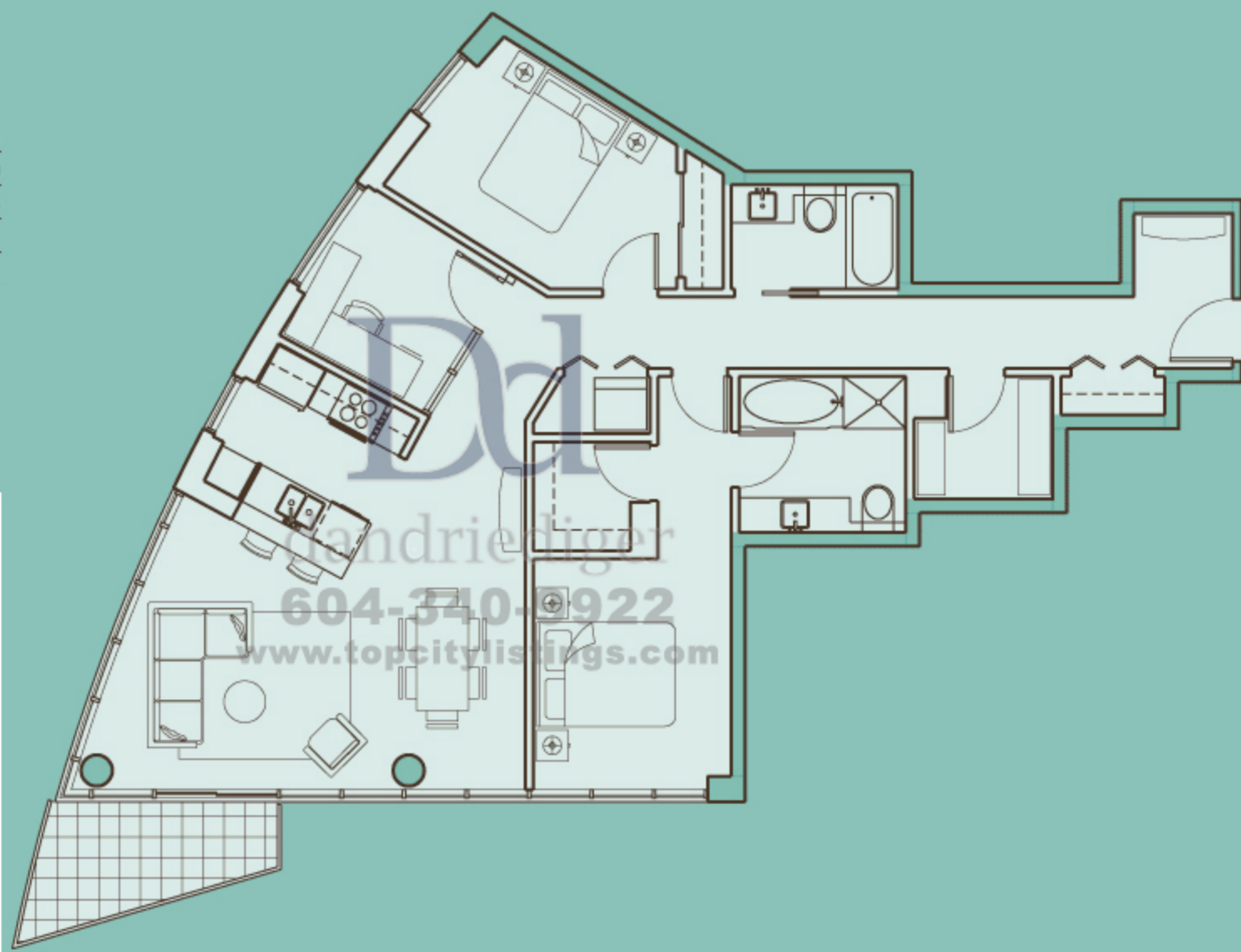
### Suite 02

Two Bedroom + Den

FLOORS	3rd to 17th
ENCLOSED AREA	1138 sq. ft.
BALCONY	64 sq. ft.
TOTAL AREA	1202 sq. ft.



Coopers Park & Waterfront



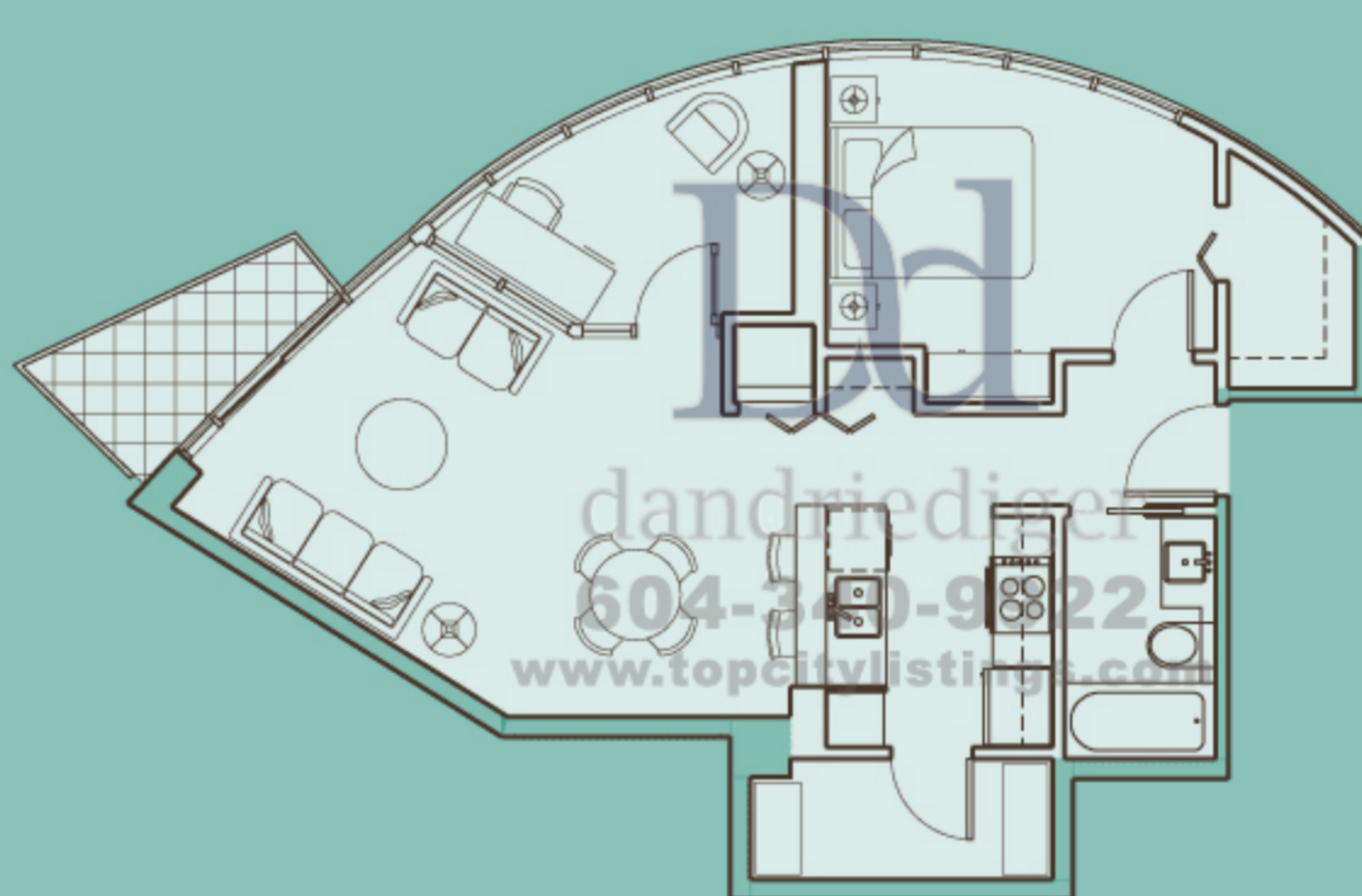
### Suite 03

One Bedroom + Den

FLOORS	3rd to 17th
ENCLOSED AREA	732 sq. ft.
BALCONY	41 sq. ft.
TOTAL AREA	773 sq. ft.



Coopers Park & Waterfront



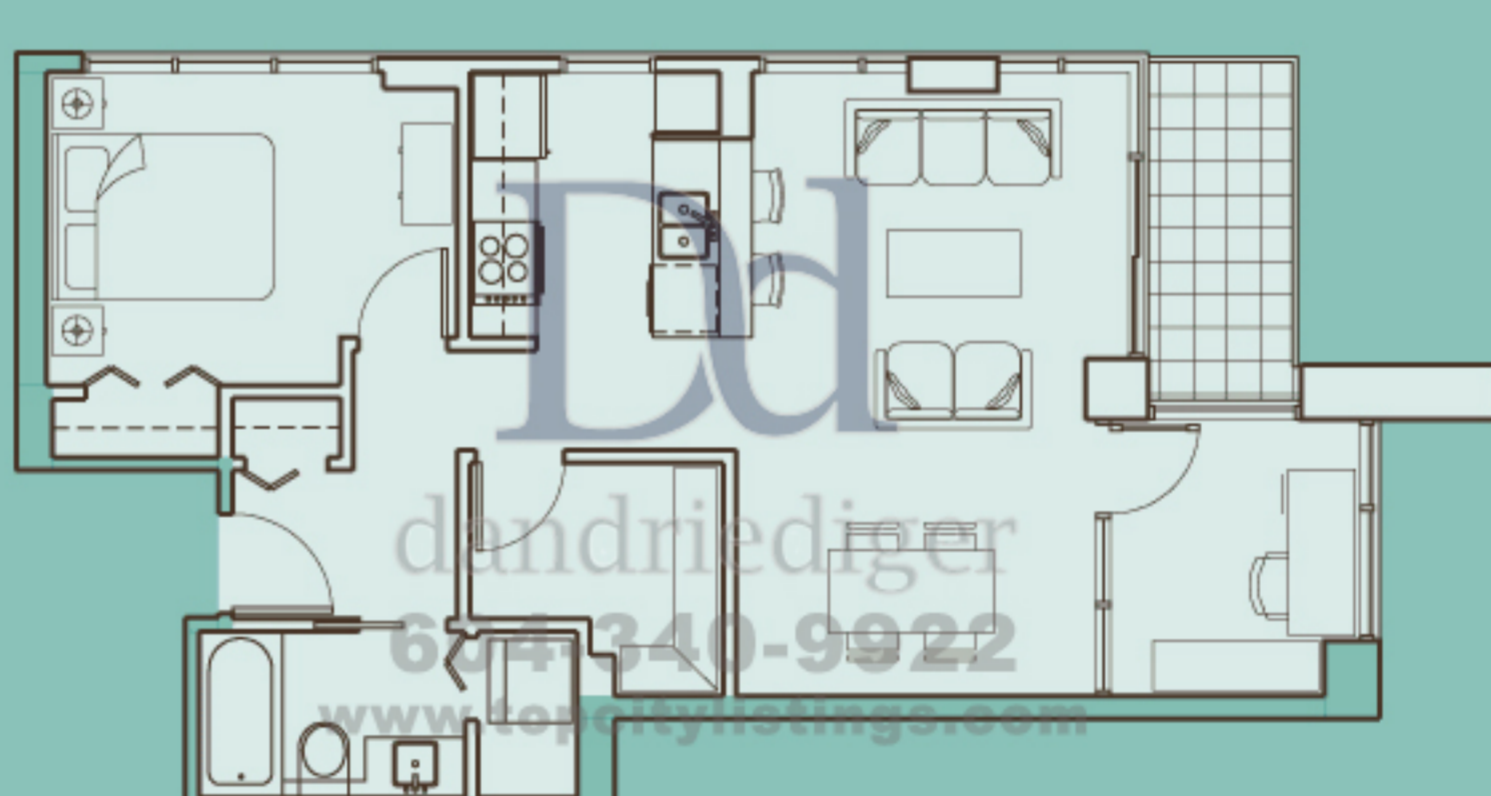
### Suite 05

One Bedroom + Den

FLOORS	6th to 17th
ENCLOSED AREA	720 sq. ft.
BALCONY	51 sq. ft.
TOTAL AREA	771 sq. ft.



Coopers Park & Waterfront



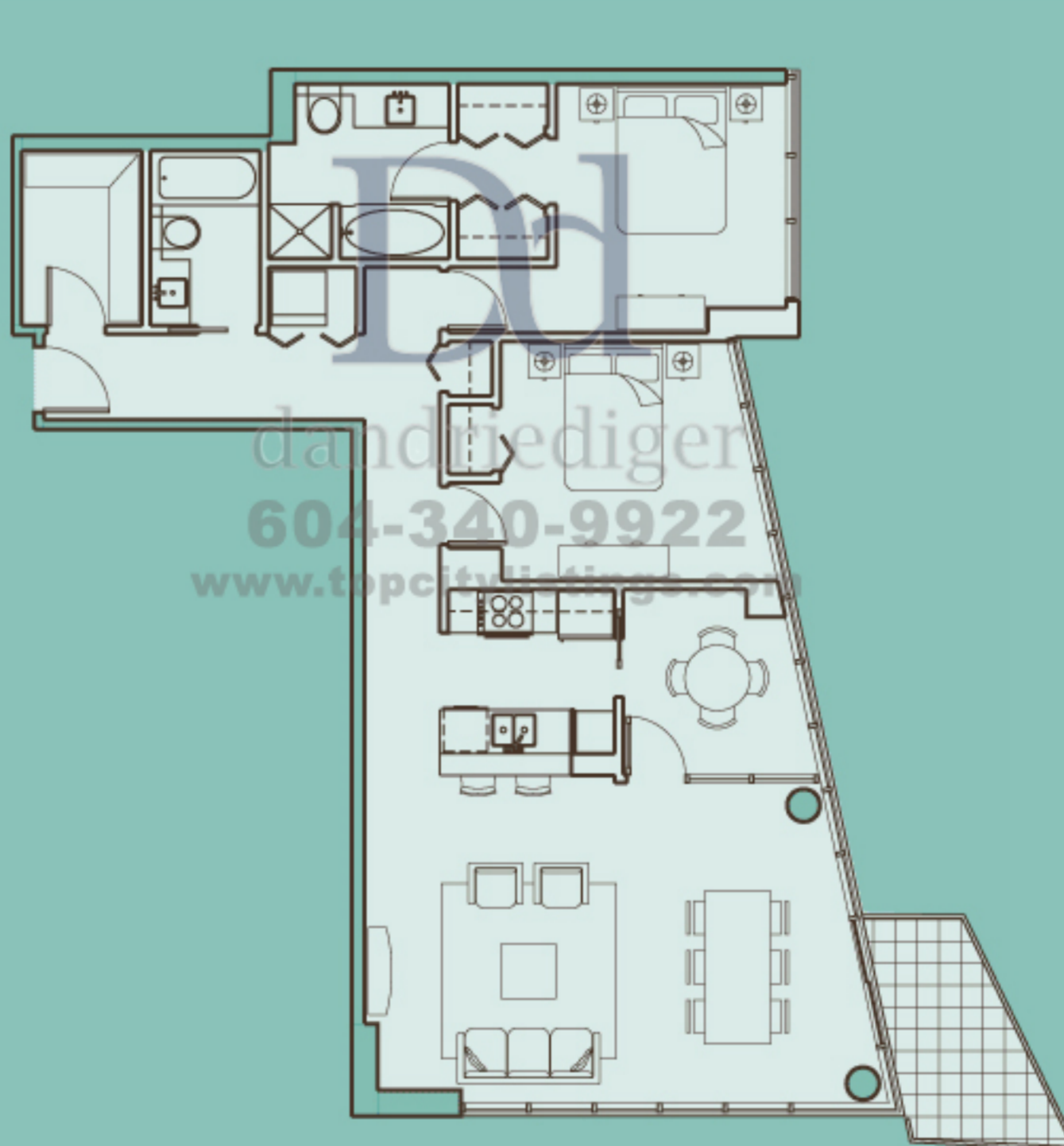
### Suite 06

Two Bedroom + Den/Nook

FLOORS	6th to 17th
ENCLOSED AREA	1193 sq. ft.
BALCONY	68 sq. ft.
TOTAL AREA	1261 sq. ft.



Coopers Park & Waterfront



### Suite 07

Two Bedroom + Den

FLOORS	6th to 17th
ENCLOSED AREA	1088 sq. ft.
BALCONY	76 sq. ft.
TOTAL AREA	1164 sq. ft.



Coopers Park & Waterfront

