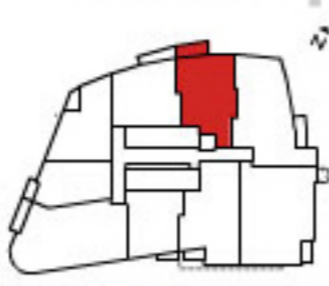
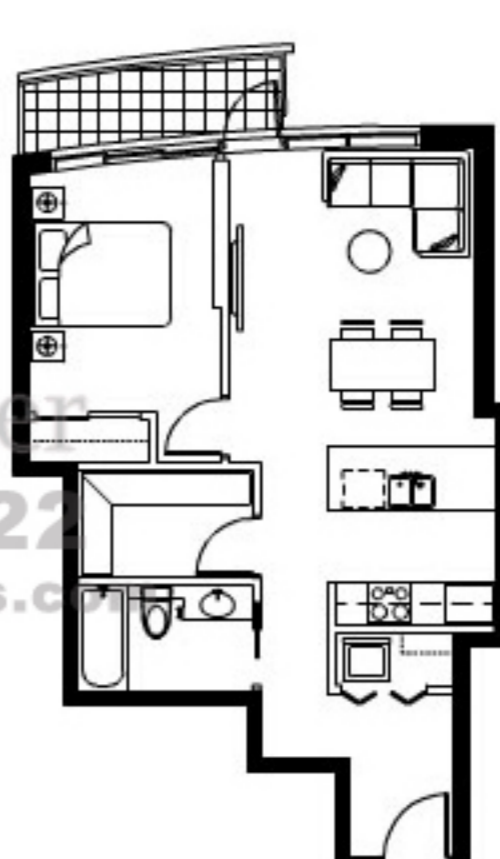


SUITE 01 - One Bedroom

Floors:	7th to 35th
Enclosed Area:	638 sq. ft.
Balcony:	47 sq. ft.
Total Area:	685 sq. ft.



TV TOWER 2

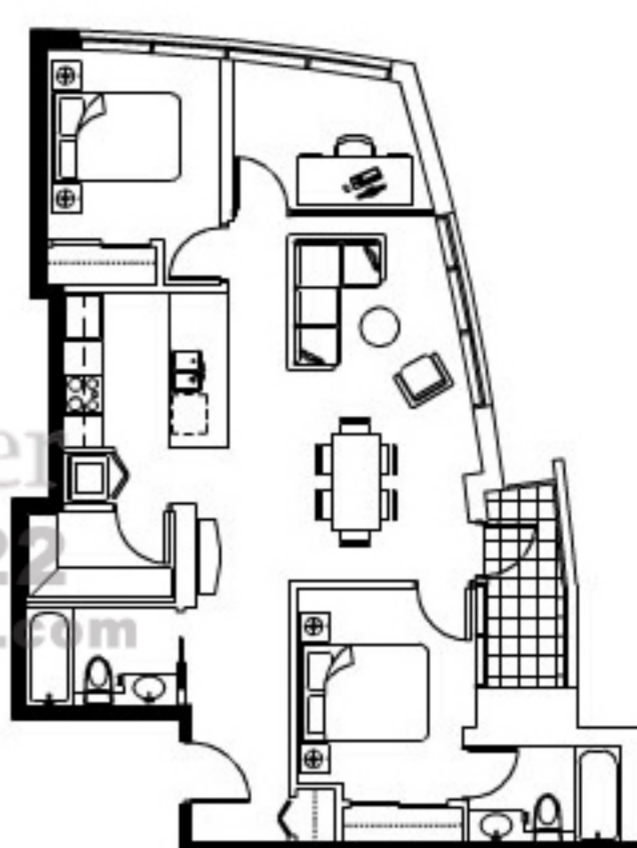


SUITE 02 - Two Bedroom & Den

Floors*:	16th to 35th
Enclosed Area:	922 sq. ft.
Balcony:	40 sq. ft.
Total Area:	962 sq. ft.

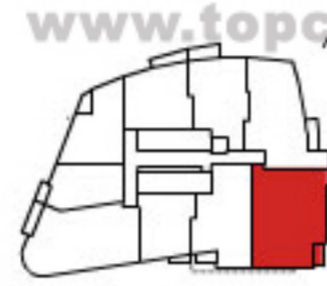


TV TOWER 2



SUITE 03 - Two Bedroom & Den

Floors*:	16th to 23rd & 29th to 35th	25th to 28th
Enclosed Area:	1,012 sq. ft.	1,038 sq. ft.
Balcony:	31 sq. ft.	31 sq. ft.
Total Area:	1,043 sq. ft.	1,069 sq. ft.



TV TOWER 2

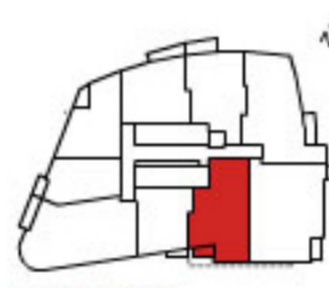


The dotted line refers to additional floor space on the 25th to 28th floors.

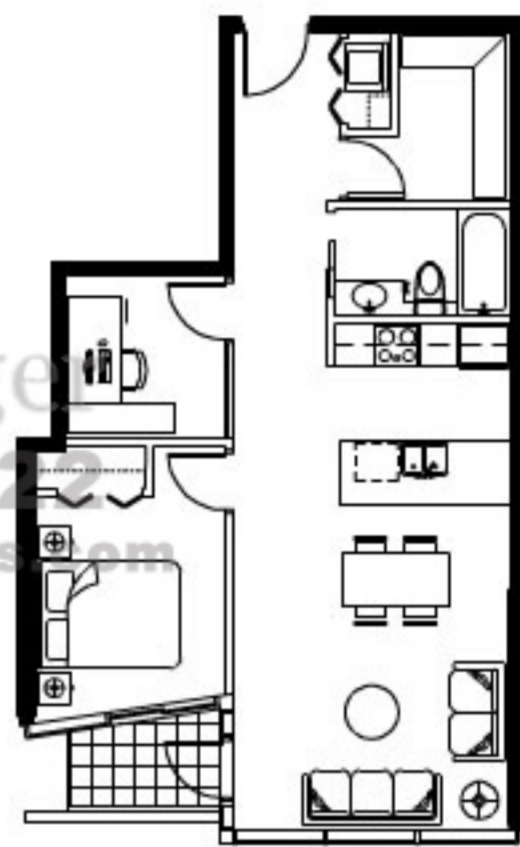
SUITE 05 - One Bedroom & Den*

Floors*:	7th to 23rd & 29th to 35th
Enclosed Area:	738 sq. ft.
Balcony:	29 sq. ft.
Total Area:	767 sq. ft.

*This floor plan also applies to Suite 3602.



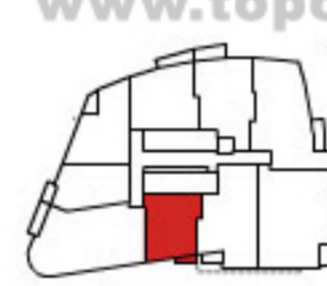
TV TOWER 2



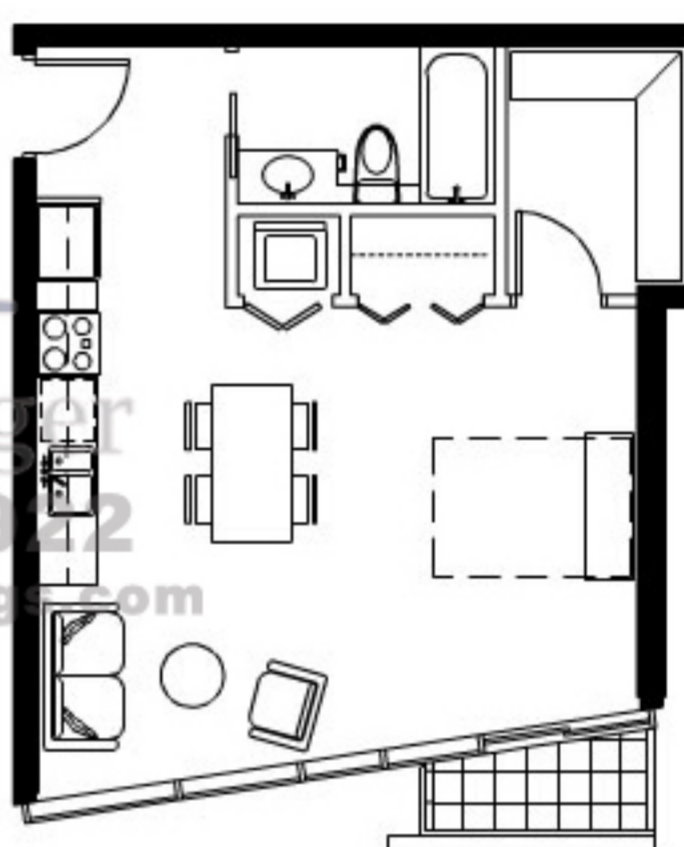
SUITE 06 - Studio

Floors:	7th to 35th
Enclosed Area:	498 sq. ft.
Balcony:	20 sq. ft.
Total Area:	518 sq. ft.

*This floor plan also applies to Suite 3503.



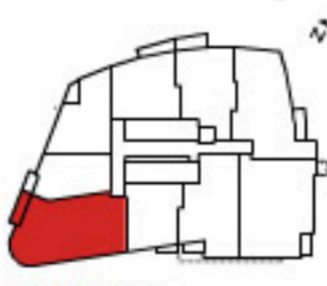
TV TOWER 2



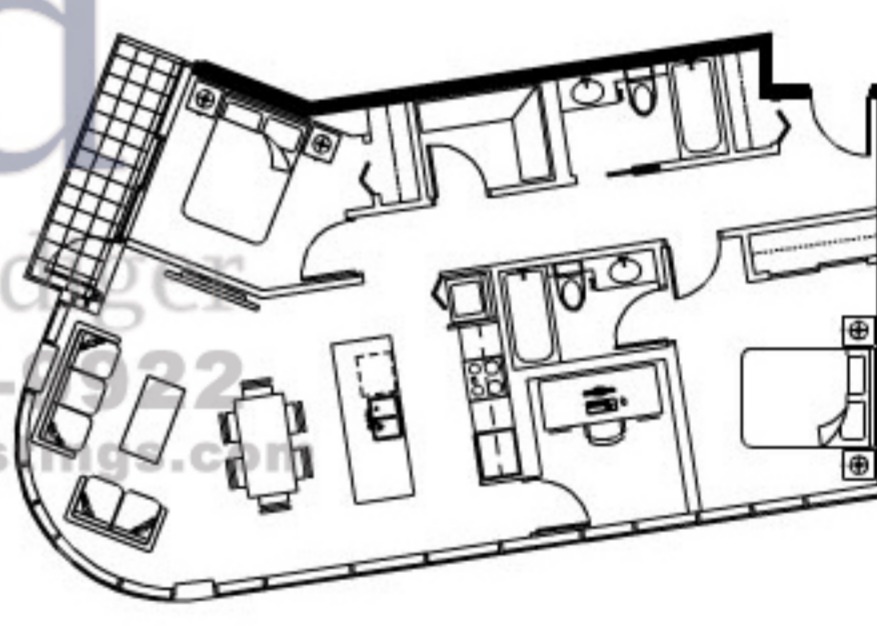
SUITE 07 - Two Bedroom & Den*

Floors:	7th to 35th
Enclosed Area:	982 sq. ft.
Balcony:	42 sq. ft.
Total Area:	1,024 sq. ft.

*This floor plan also applies to Suites 507 & 607.



TV TOWER 2



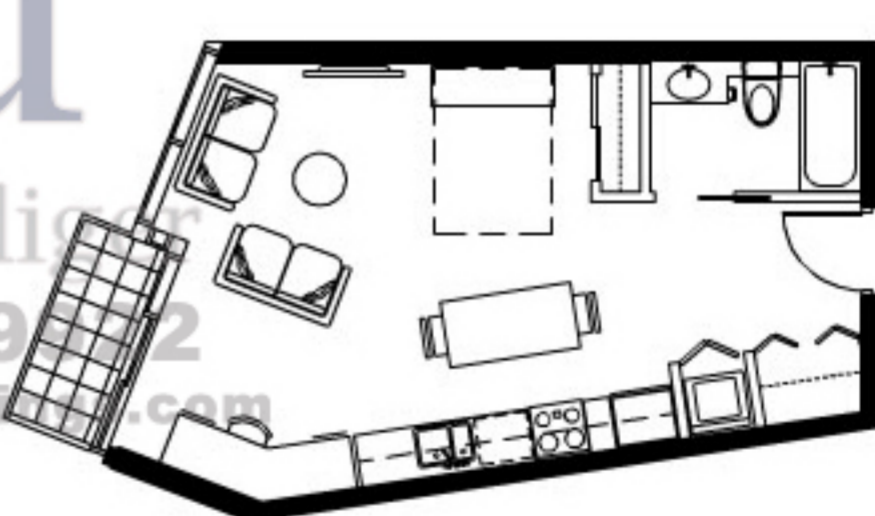
SUITE 08 - Studio

Floors:	7th to 35th
Enclosed Area:	439 sq. ft.
Balcony:	27 sq. ft.
Total Area:	466 sq. ft.

*This floor plan also applies to Suites 306, 508 and 608.



TV TOWER 2



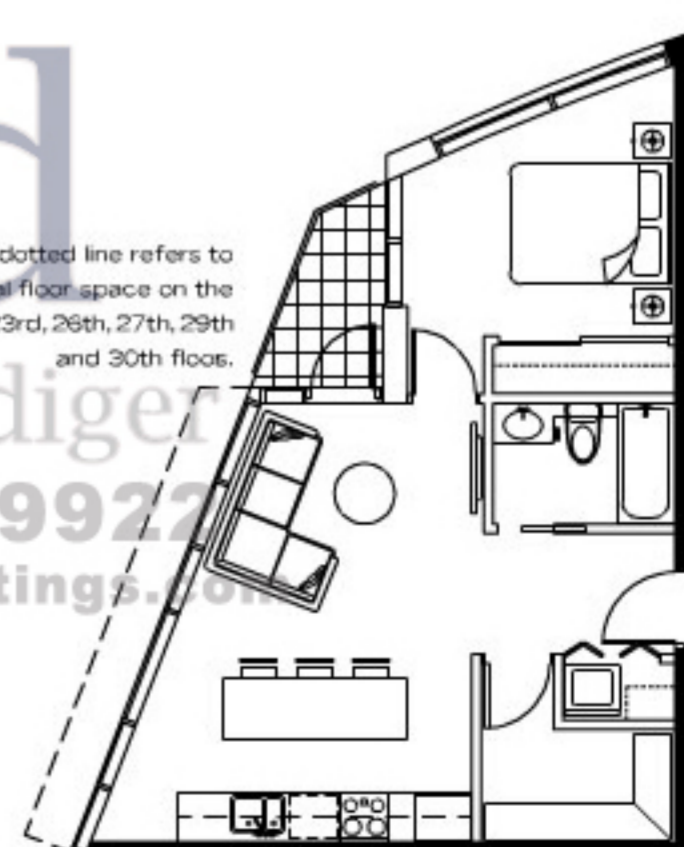
SUITE 09 - One Bedroom

Floors:	7th to 21st, 25th, 28th & 31st to 35th	22nd, 23rd, 26th, 27th, 29th & 30th
Enclosed Area:	562 sq. ft.	597 sq. ft.
Balcony:	32 sq. ft.	32 sq. ft.
Total Area:	594 sq. ft.	629 sq. ft.

The dotted line refers to additional floor space on the 22nd, 23rd, 26th, 27th, 29th and 30th floors.

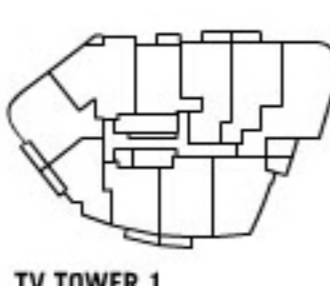


TV TOWER 2



SUITE 10 - One Bedroom

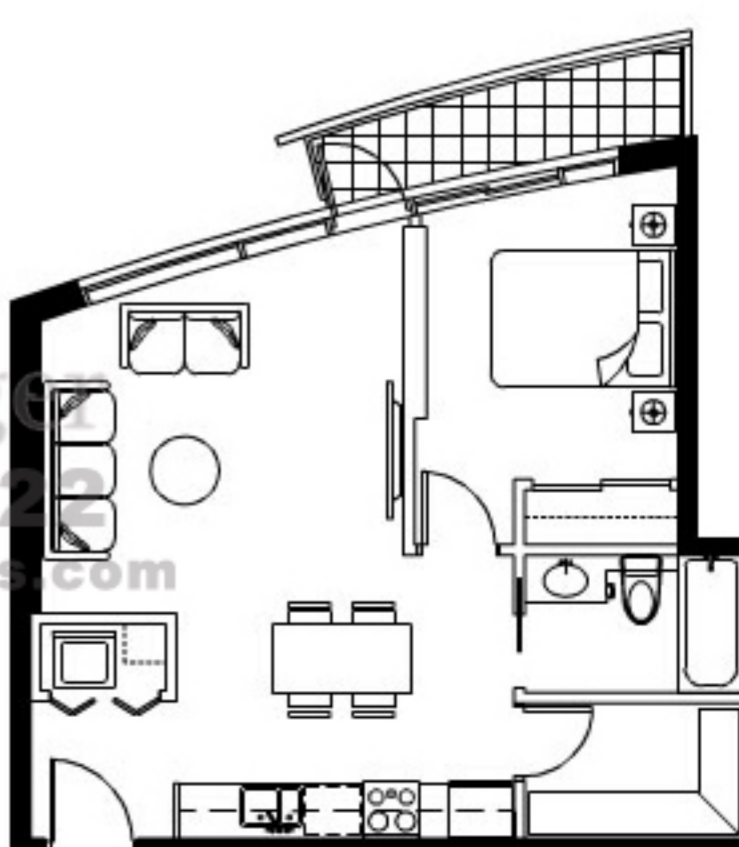
Floors:	7th to 35th
Enclosed Area:	600 sq. ft.
Balcony:	46 sq. ft.
Total Area:	646 sq. ft.



TV TOWER 1



TV TOWER 2



Click on floor plan to enlarge